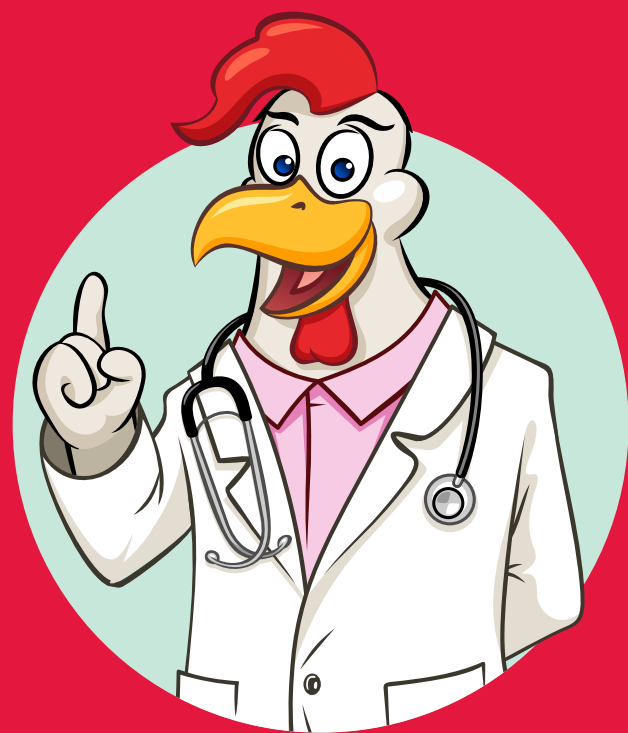


Quick guide to making a disease diagnosis

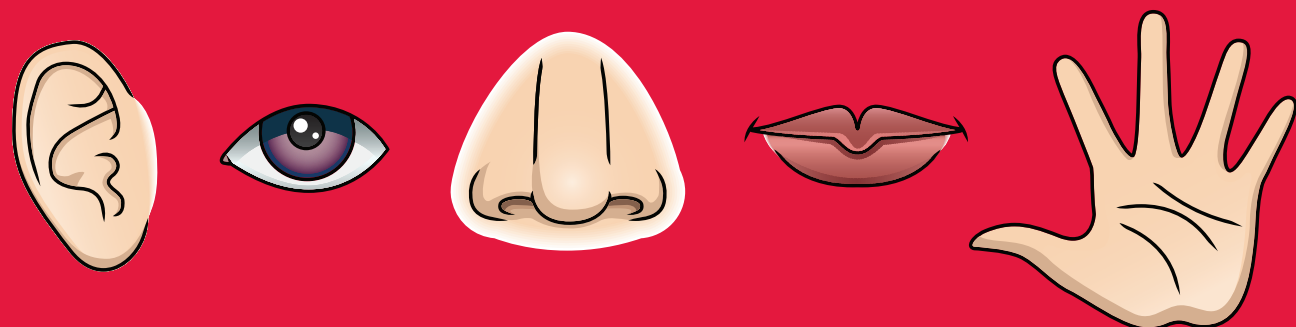
1. Anamnesis / info

Once you are confronted with a health issue, first step is to collect as much information as possible. This can be with employees in an answer-question model, or with data. Compare the performance with the previous cycles.



2. Inspection

Take the necessary bio-security measures, visit the farm/house(s) and pick up sick and normal birds and check for abnormalities both in behavior and in physical condition. Note that birds get very excited quickly. Use your senses: hear, see, smell, taste and feel.



3. Post mortem

Select a minimum of 5 affected birds and 5 dead birds for post mortem. Apply the correct euthanasia method.



4. Differential diagnosis

Make a list with possible causes of the findings.



5. Laboratory investigations

Collect laboratory samples based on your differential diagnosis list to exclude or confirm a finding.



6. Preliminary treatment plan

Make a preliminary treatment plan with the management team with the objective to limit the disease spreading among other houses or farms. Apply responsive management actions, and place any possible treatments etc. Ensure bio-security awareness across all departments.



7. Narrow the differential diagnosis

Use the laboratory results to narrow your differential diagnosis. Consult your lab in case further confirmatory tests are needed.



8. Evaluate treatment plan

Evaluate the preliminary plan during and after the course of the disease. Evaluate the performance and if needed, apply responsive change in management practices, vaccination schedules, treatments, etc.



9. Final diagnosis

Now we have a final diagnosis, apply responsive changes in management practices, vaccination schedules, treatments, nutritional adaptations etc.

