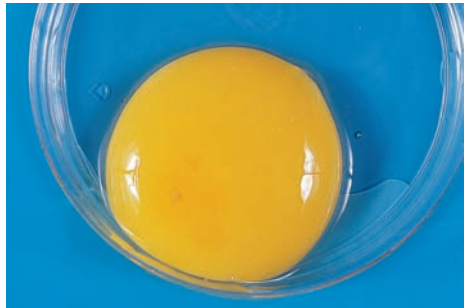
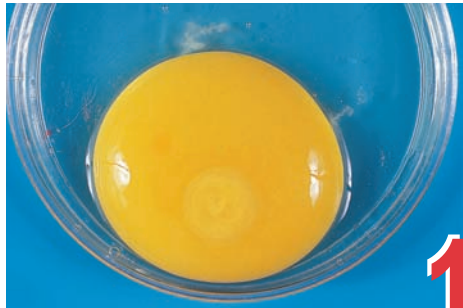




# CHICK EMBRYO DEVELOPMENT



**INFERTILE**  
• No development.



**DAY 1**  
• Appearance of tissue development.



**DAY 2**  
• Tissue development very visible.  
• Appearance of blood vessels.



**DAY 3**  
• Heart beats.  
• Blood vessels very visible.



**DAY 4**  
• Eye pigmented.



**DAY 5**  
• Appearance of elbows and knees.



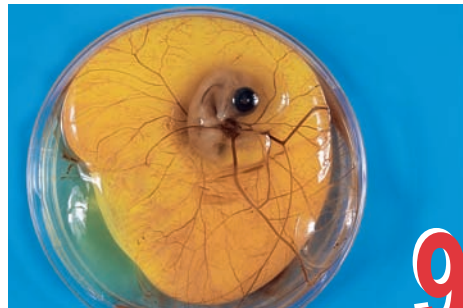
**DAY 6**  
• Appearance of beak.  
• Voluntary movements begin.



**DAY 7**  
• Comb growth begins.  
• Egg tooth begins to appear.



**DAY 8**  
• Feather tracts seen.  
• Upper and lower beak equal in length.



**DAY 9**  
• Embryo starts to look bird-like.  
• Mouth opening appears.



**DAY 10**  
• Egg tooth prominent.  
• Toe nails.



**DAY 11**  
• Comb serrated.  
• Tail feathers apparent.



**DAY 12**  
• Toes fully formed.  
• First few visible feathers.



**DAY 13**  
• Appearance of scales.  
• Body covered lightly with feathers.



**DAY 14**  
• Embryo turns head towards large end of egg.



**DAY 15**  
• Gut is drawn into abdominal cavity.



**DAY 16**  
• Feathers cover complete body.  
• Albumen nearly gone.



**DAY 17**  
• Amniotic fluid decreases.  
• Head is between legs.



**DAY 18**  
• Growth of embryo nearly complete.  
• Yolk sac is still on outside of embryo.  
• Head is under the right wing



**DAY 19**  
• Yolk sac draws into body cavity.  
• Amniotic fluid gone.  
• Embryo occupies most of space within egg (not in the air cell).



**DAY 20**  
• Yolk sac drawn completely into body.  
• Embryo becomes a chick (breathing in air cell).  
• Internal and external pip.